



# MISSISSIPPI SAND, LLC.

MANUFACTURE AND DISTRIBUTION OF FRAC SAND

## IMPROVING OUR CUSTOMER EXPERIENCE

At Mississippi Sand, LLC we strive to improve our customer experience and differentiate ourselves from our competition.

We work to accomplish this by focusing on the areas of logistics, operations, quality control, and sales to provide the best products and level of service to our customers.



# Mississippi Sand, LLC

## OVERVIEW AND MISSION

Mississippi Sand, LLC is committed to the manufacturing and distribution of high quality frac sand for use in the oil and gas service industry. With a significant reserve located in the St. Peter Sandstone formation, Mississippi Sand owns a premium product source. These reserves meet all API specifications for proppant sand.

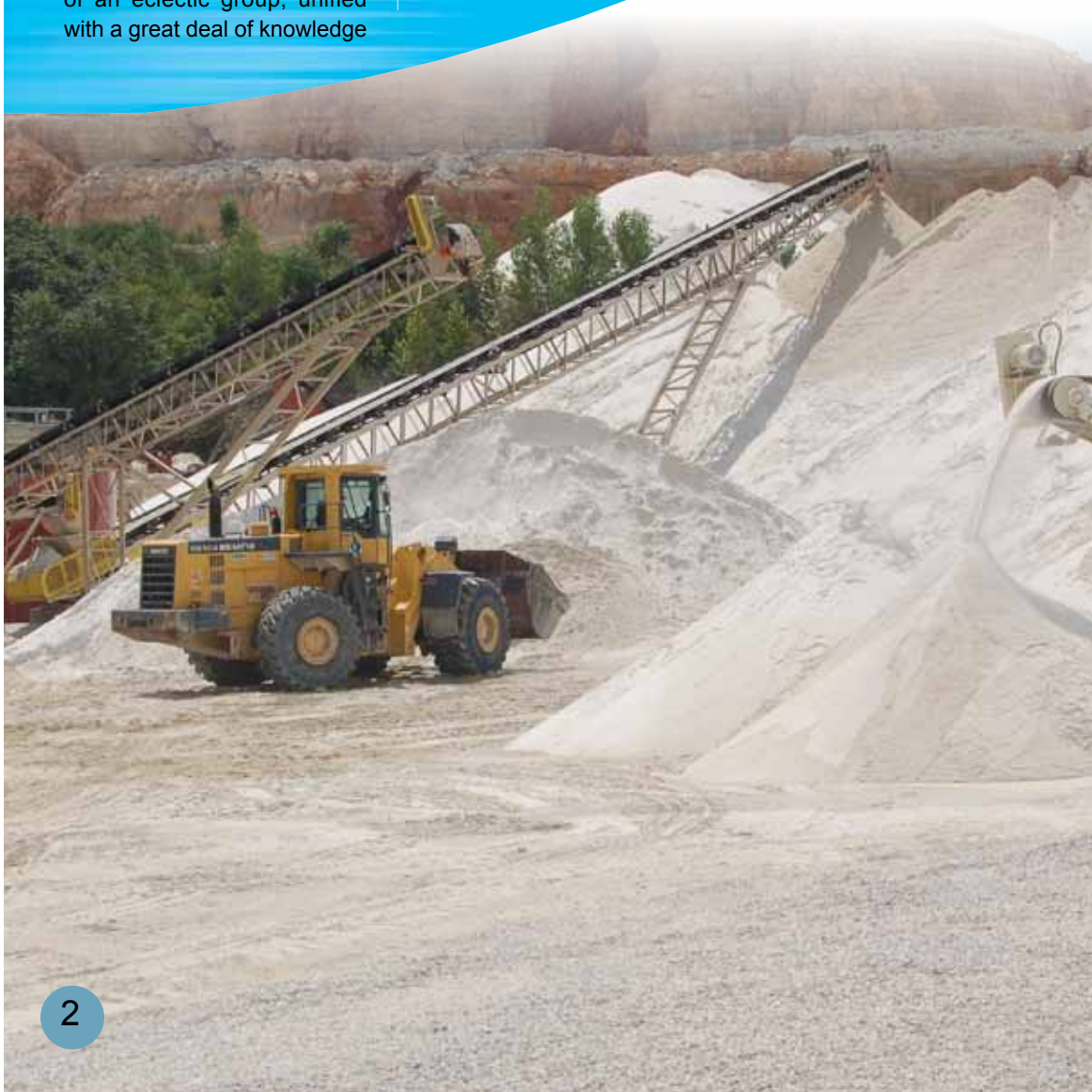
The management team within Mississippi Sand is comprised of an eclectic group, unified with a great deal of knowledge

and experience in many areas of focus. These areas include the petroleum and petrochemical industry, energy trading, mineral processing and operations, material handling optimization, transportation and logistics, and quality control. With this diversified group focused on the common goal of providing a high quality product in a timely fashion, Mississippi Sand has

managed to meet and exceed customer expectations.

Centrally located just south of St. Louis in Festus, MO, the Mississippi Sand production facility is conveniently positioned to serve all markets. This state of the art facility has the capability to safely produce year round, 24 hours a day, and the ability to utilize a multi-modal distribution network. With a proven reserve, an ex-

perienced management team and the ability to provide a high quality product in a timely manner, Mississippi Sand is quickly becoming a leading supplier in the proppant sand market.



## FACILITY ADVANTAGES

On-site quality control technician ensures the production of API specified products



Multiple load-out stations and scales provide efficient and timely loading



Products made available 24 hours a day, 7 days a week



Significant storage capacity and product flexibility

# processing plant

## STATE OF THE ART FACILITY

The best components ensure a quality product

The construction of our facility was complete in the spring of 2008 and we began production in June of that same year. Our facility produces a high quality product mix consisting of 30/50, 40/70 and 100 mesh products.

Mississippi Sand, LLC carefully selected the equipment to be used in processing our sand into API specified Frac Sand. Significant research and consulting was conducted with vendors and industry specialists in order to ensure we utilized the best equipment available.

Product quality and efficiency were the focus when making final equipment selections. A McLanahan LPT Hydrosizer was chosen for the washing and initial sizing process. A Ventilex fluid bed dryer was chosen to dry the washed and pre-sized sand. In the final stage of production, four Rotex Mineralizers were selected to screen the dried sand. These quality components ensure that our products meet all API specifications.

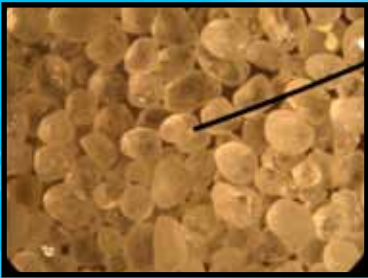


# product quality

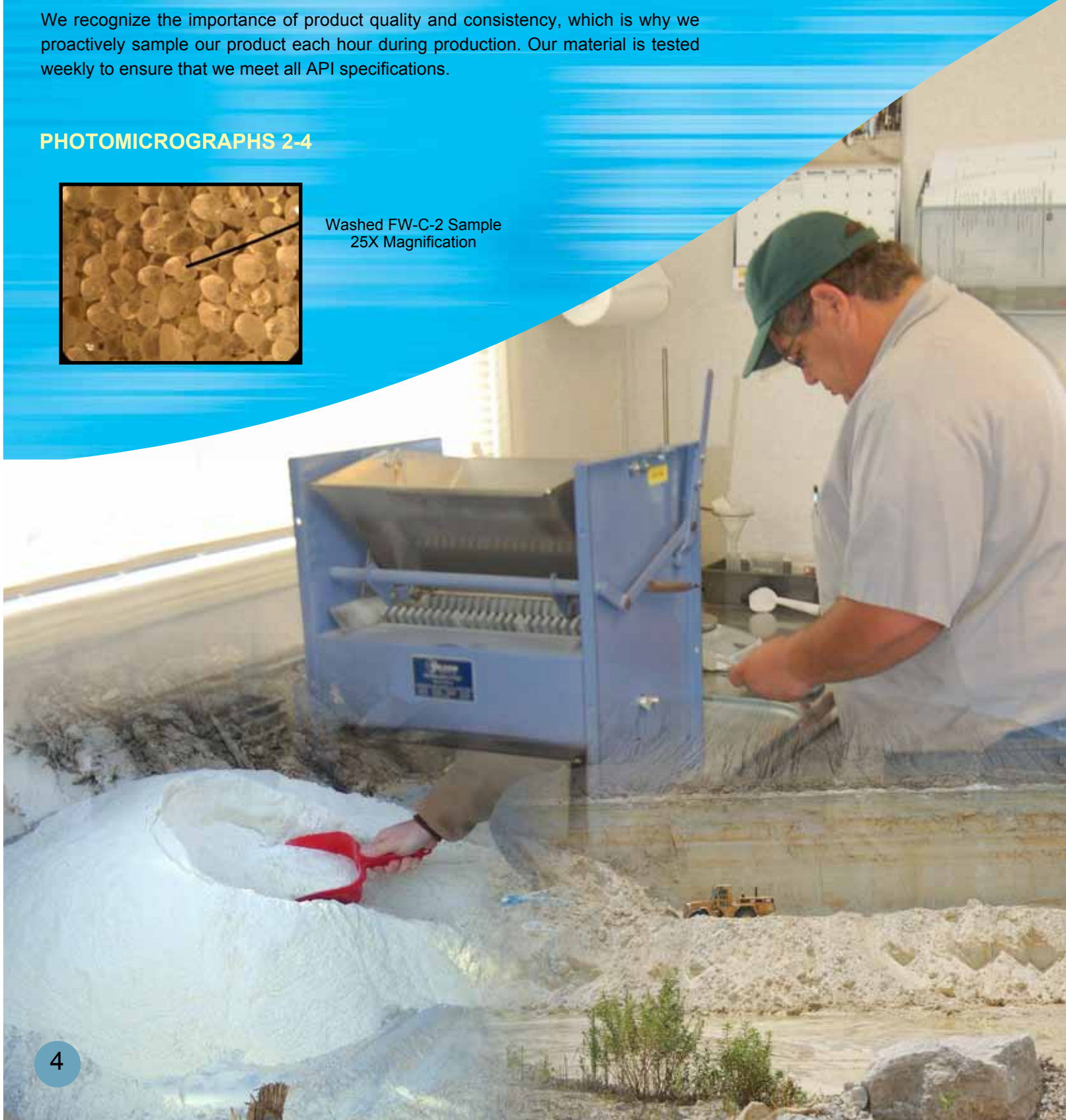
Millions of tons of St. Peter Sandstone are located within Fred Weber, Inc.'s active aggregate quarry in Festus, Missouri. This high quality sand yields very pure silica sand and is readily accessible for immediate use.

We recognize the importance of product quality and consistency, which is why we proactively sample our product each hour during production. Our material is tested weekly to ensure that we meet all API specifications.

## PHOTOMICROGRAPHS 2-4



Washed FW-C-2 Sample  
25X Magnification



# transportation and logistics

## TIMELY DELIVERY IN THE DRILLING MARKET

Mississippi Sand, LLC understands the importance of timely frac sand delivery in the drilling market. Armed with several seasoned transportation and logistics partners and over 200 years of combined experience, we provide customers with confidence in knowing their product will be available when needed.

With a facility located centrally in the St. Louis area, Mississippi Sand is well positioned to handle shipments all across the United States. Our distribution network includes rail connections to all U.S. Class I Railroads and direct truck access. By working closely with the railroads, we have the opportunity to load railcars for shipment to any desired destination. From a trucking perspective, we have access to a fleet of more than 80 pneumatic tank trucks.

Due to our close proximity to the market by truck, we have the ability to provide competitive transportation rates that create the opportunity for savings.



# logistics management



## RAIL CAR TRANSPORT

Mississippi Sand utilizes the experienced team at Affton Terminal Services for loading railcars. Material is trucked from the production plant in Festus to this location in St. Louis, where Affton can load up to 10 railcars per day. Located on the TRRA, the Affton Terminal offers rail access to all U.S. Class I Railroads. Mississippi Sand handles the generation of a Bill of Lading for the railroads and certifies the weight of each car.



## RIVER TRANSPORT

Our logistics management team is in constant contact with our customers, ensuring that their sand needs are met. With a diversified logistics network, we move an average of 4,500 tons of material each week by intracoastal river way. Each barge is inspected and certified for cleanliness, loaded to meet draft restrictions and finally covered and transported to our river terminals. The barges are then emptied into storage and the sand is made available for truck load out.

## distribution centers

With a focus on availability, Mississippi Sand provides the ability to access material from five established distribution locations:

- Festus, MO
- Shreveport, LA
- North Little Rock, AR
- Judsonia/Searcy, AR
- Fruita, CO



# frac sand distribution

One of the primary advantages possessed by Mississippi Sand, LLC is the comprehensive distribution network. This network creates convenience and reliability by providing a number of locations in which material can be sourced.



## distribution locations:

### JUDSONIA/SEARCY, AR

Mississippi Sand owns and operates this distribution facility, and material is made available 24 hours a day for our customers. There are 3,000 tons of sand storage on site which is received directly from the production plant in Festus, MO. Located just off Hwy. 67, this facility will offers a very efficient and timely load-out, allowing for a very quick turn around for trucks.

### SHREVEPORT, LA

Mississippi Sand occupies dedicated storage at the Oakley Louisiana facility, located within the Shreveport-Bossier Industrial Park. Situated on the Red River, this terminal is easily accessible from the I-20 and 49, allowing for convenient frac sand distribution into both the Haynesville Shale and the Barnett Shale. With 24 hour access and over 7,000 tons of live storage, Mississippi Sand is available when needed.

### NORTH LITTLE ROCK, AR

Mississippi Sand has a dedicated silo that was constructed in 2008 and stores up to 2,200 tons of material. This silo is located on site at Bruce Oakley, Inc., which sits right in North Little Rock, AR. By utilizing the barges as floating storage and the transfer system into the silo, we have the ability to make sand available at all times for our customers. Material can be loaded into outbound trucks 24 hours a day, and trucks are always made available through Bruce Oakley, Inc.

### FRUITA, CO

Strategically positioned to service the drilling market in the Piceance Basin, Mississippi Sand operates a dedicated flat storage facility located in Fruita, Colorado. With over 4,000 tons of inside sand storage and enough track space to store an additional 2,000 tons in railcars, this facility has the needed capabilities to service the variability of the drilling industry. Material and hauling services are available 24 hours a day to fulfill any customer needs.

### FESTUS, MO

The processing of all our products takes place at this location. The facility is located directly off I-55 just 36 miles south of the city of St. Louis, MO. With a timely load-out system, trucks have the ability to get into the facility, get loaded and get back on the road very quickly.



## MISSISSIPPI SAND, LLC.

MANUFACTURE AND DISTRIBUTION OF FRAC SAND

Mr. Patrick Kellerman  
Mississippi Sand, LLC  
1400 West Terradyne, Suite 216  
Andover, KS 67002  
(316) 218-9392 - Office  
(316) 641-0100 - Cell  
(316) 218-9397 - Fax  
pjk@icr.kscoxmail.com

FOR MORE INFORMATION ABOUT  
MISSISSIPPI SAND, LLC PLEASE  
CONTACT ONE OF OUR  
REPRESENTATIVES OR VISIT  
[WWW.MISSISSIPPI-SAND.COM](http://WWW.MISSISSIPPI-SAND.COM)

## team members

